

**CHARLES ASTAFAN**

General Manager



**Future Tire Technologies &  
Managing Processing Challenges**

# NEW TIRES & TECHNOLOGIES



**MICHELIN**

X TWEEL TURF

**GOODYEAR**

WRANGLER  
ALL-TERRAIN  
ADVENTURE  
WITH KEVLAR

**CONTINENTAL**

CONTIPROCONTACT  
WITH CONTISEAL

**PIRELLI**

P ZERO

**BRIDGESTONE**

DRIVEGUARD





**TUBELESS RADIAL  
TIRE**

**DUPONT™ KEVLAR®**

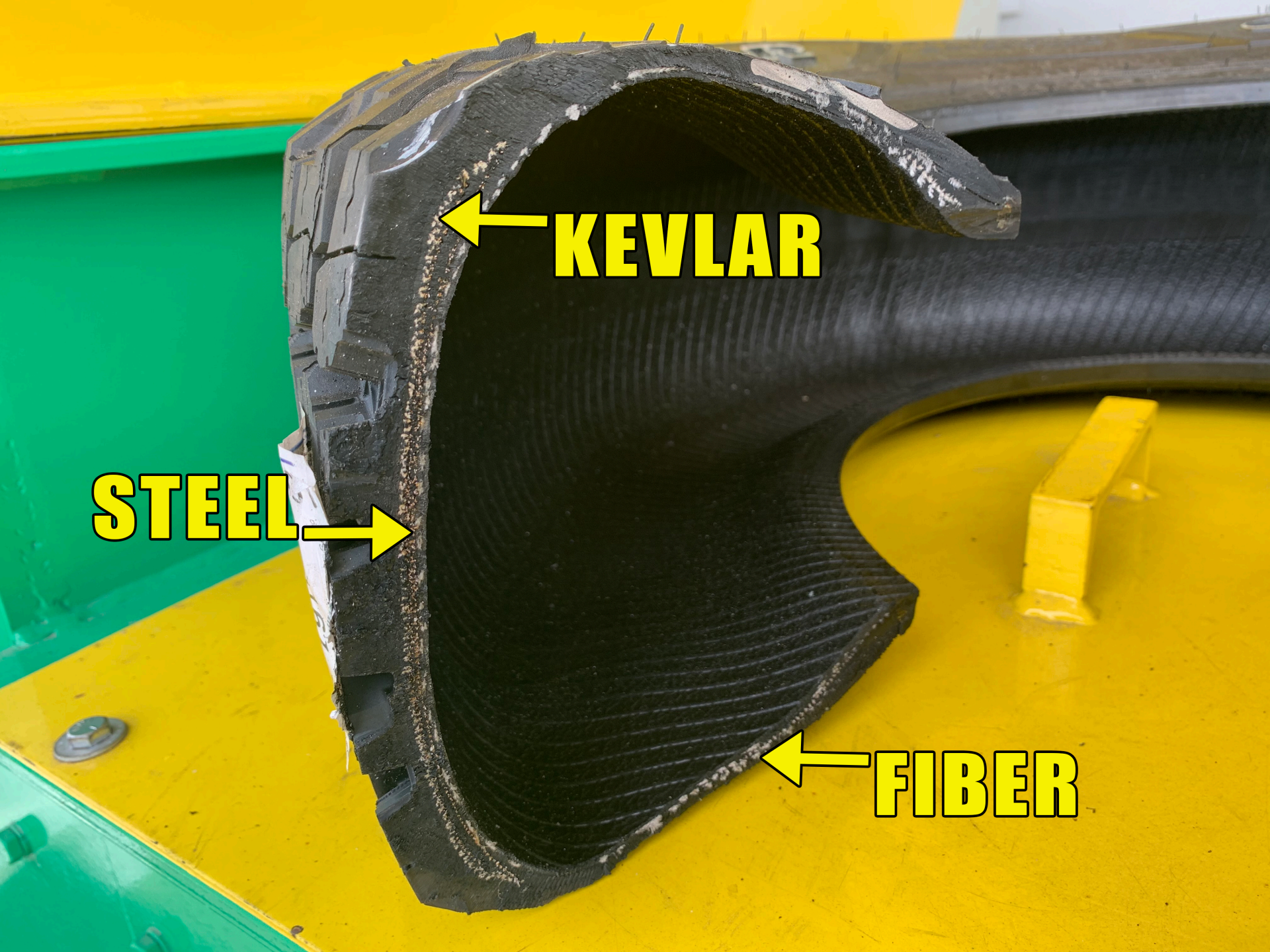
**LT HAS 30% MORE STEEL**

**DURAWALL™  
TECHNOLOGY**



**GOODYEAR WRANGLER ALL-TERRAIN  
ADVENTURE WITH KEVLAR**





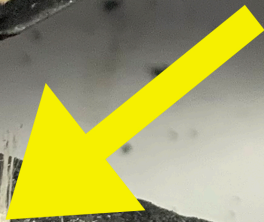
**KEVLAR**

**STEEL**

**FIBER**



**KEVLAR**





**AIRLESS RADIAL  
TIRE**

**SHEAR BEAM  
TECHNOLOGY**

**POLY-RESIN SPOKES**



**MICHELIN X TWEEL TURF**



**CM**  
Shredders

Industrial  
Shredders







**KEVLAR**



**TUBELESS RADIAL  
TIRE**

**SEAL INSIDE**

**RUN FLAT**

**PIRELLI NOISE  
CANCELLING SYSTEM™**



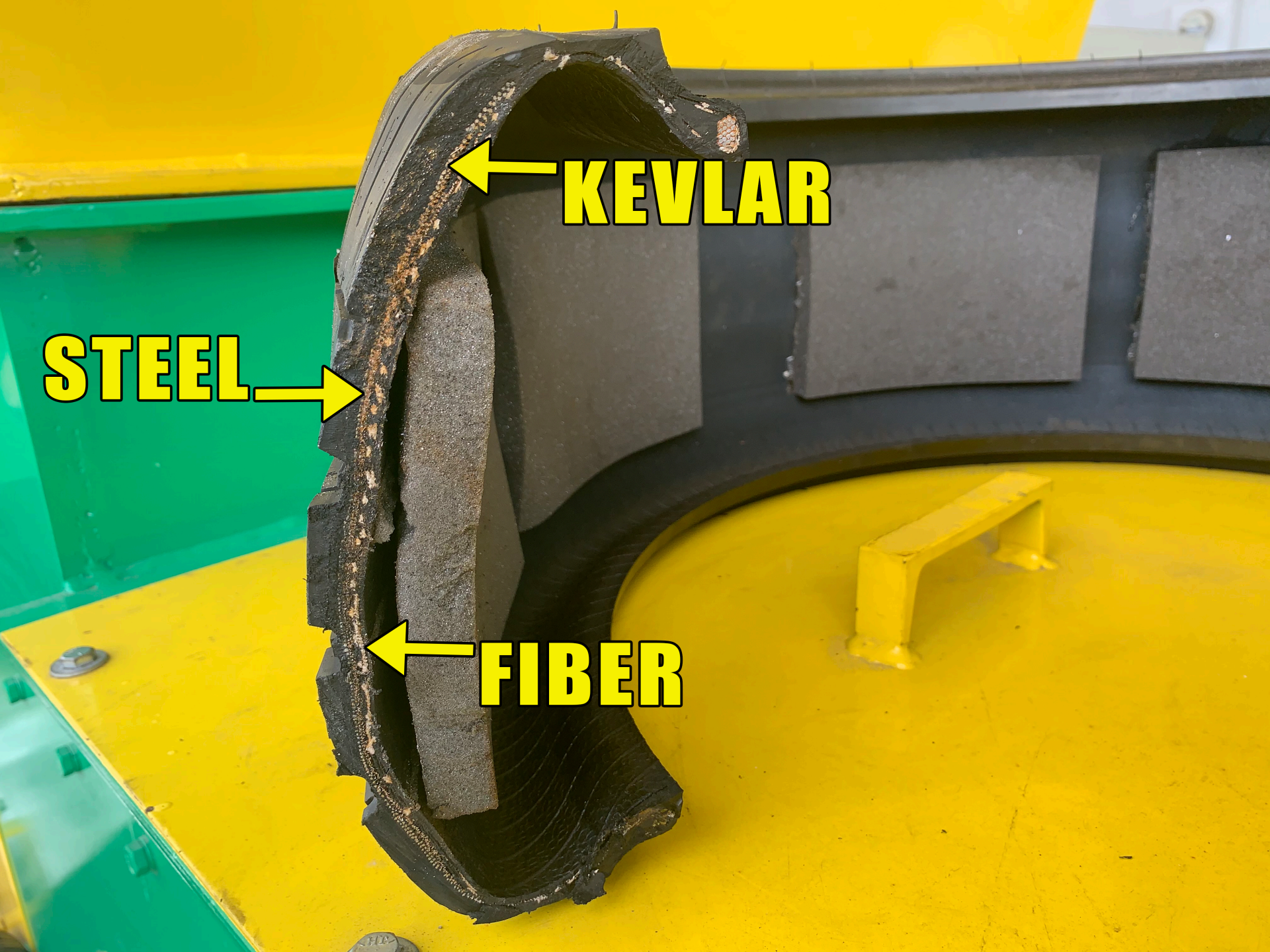
**PIRELLI P ZERO**



**STEEL** →

← **KEVLAR**

← **FIBER**





**TUBELESS RADIAL  
RUN FLAT**

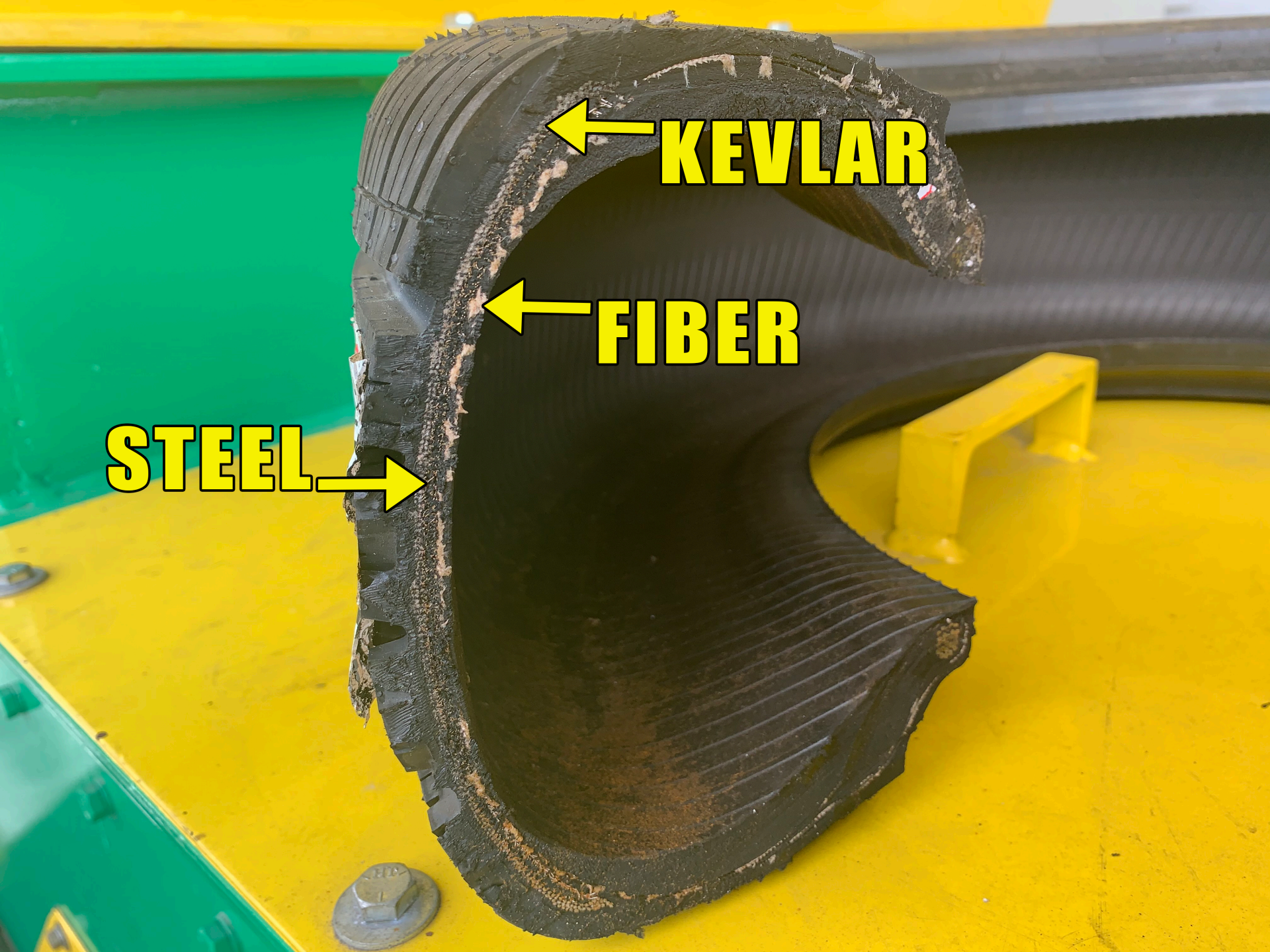
**SILICA SEAL ON  
TREAD INTERIOR**

**NANOPRO-TECH  
REINFORCED  
SIDEWALLS**



**BRIDGESTONE DRIVEGUARD**





**← KEVLAR**

**← FIBER**

**STEEL →**



**TUBELESS RADIAL  
TIRE**

**CONTISEAL™  
GUM-LIKE SEALANT**

**TWIN STEEL BELT  
INTERIOR**



**CONTINENTAL CONTIPROCONTACT  
CONTISEAL™**









**NOT A CHANCE!**





# NEW TIRE TECHNOLOGY IS EVER EVOLVING

**Safety**

**Tire road friction coefficient**

**Rolling resistance**

**Fuel economy**

**Reduced reliance on natural rubber**

**Environment concerns**

**Costs**

**A host of other drivers**





# **FACT: RECYCLING IS NOT A CONSIDERATION IN NEW TIRE DESIGN**

**Tires are a unique and highly engineered product.**

**The tires unique design and resilience is what has created our industry.**

**The tire recycling industry needs to evolve with new tire designs.**





# CURRENT STATE

Low percentage of volume

Tires with unique properties must be identified prior to processing

Can current equipment properly handle?

Can tires be diverted to particular markets

Some tires may need to be diverted to landfill





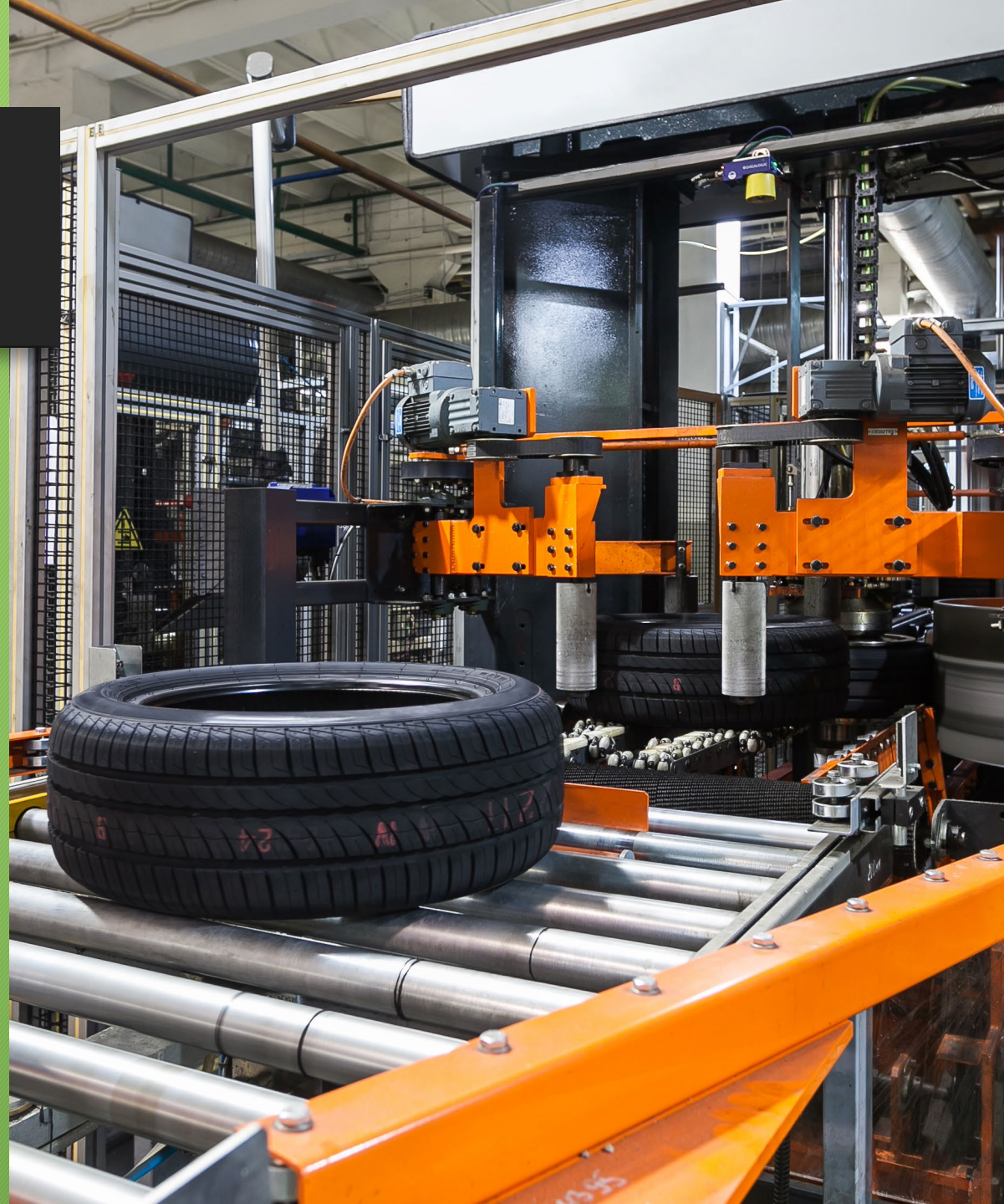
# FUTURE STATE

New tire technologies will continue evolving more rapidly

Computer modeling and testing will advance technologies faster than in the past

The percentage of new, different and unique tires will increase

The industry will adapt!





# QUESTIONS?

**CHARLES ASTAFAN**

General Manager



**Future Tire Technologies &  
Managing Processing Challenges**